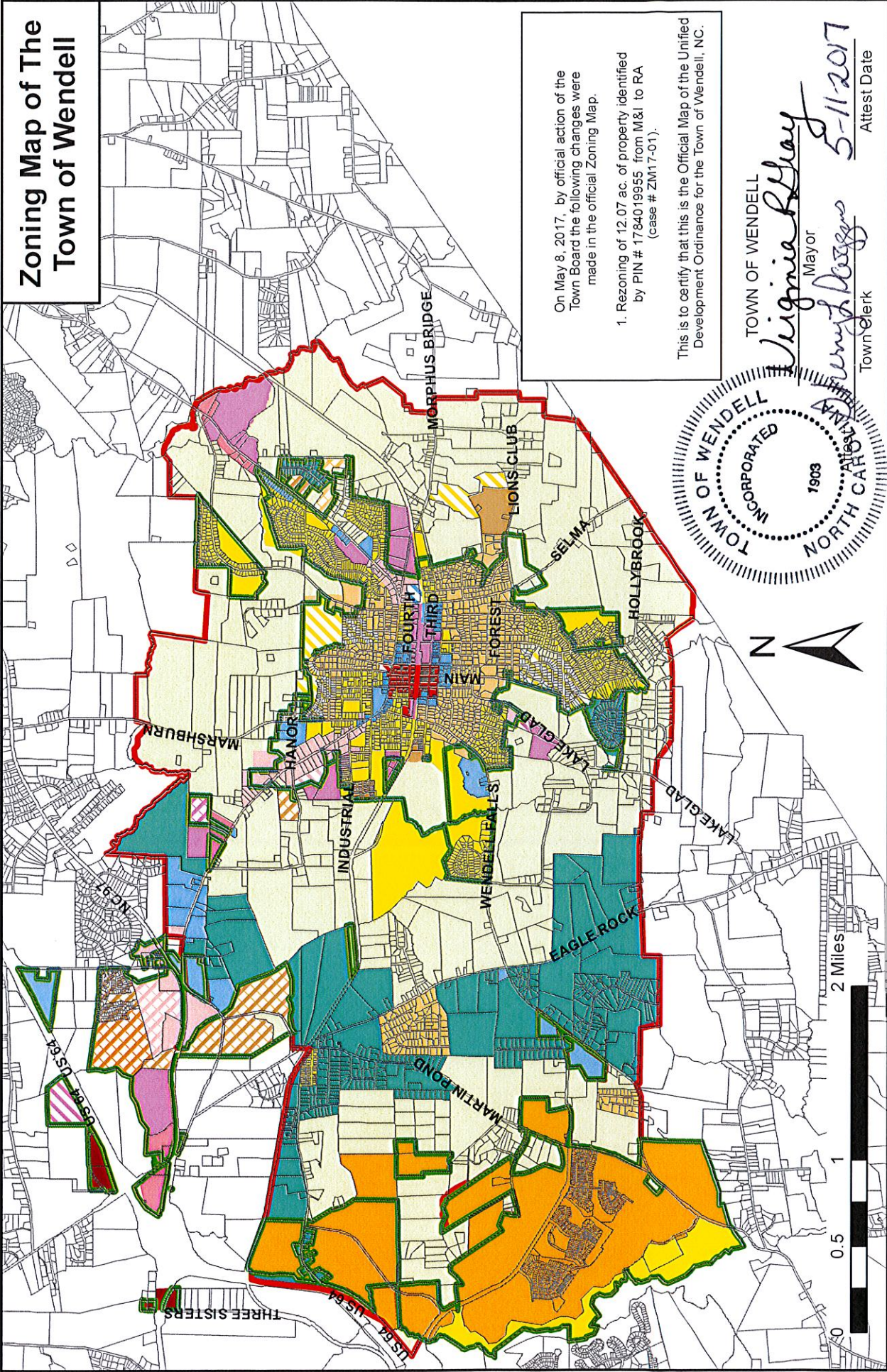


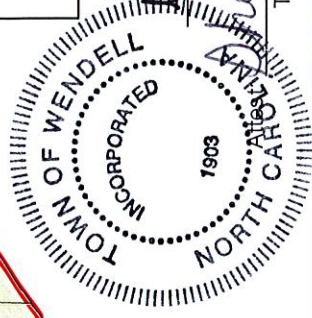
Zoning Map of The Town of Wendell



On May 8, 2017, by official action of the Town Board the following changes were made in the official Zoning Map.

1. Rezoning of 12.07 ac. of property identified by PIN # 1784019955 from M&I to RA (case # ZM17-01).

This is to certify that this is the Official Map of the Unified Development Ordinance for the Town of Wendell, NC.



TOWN OF WENDELL
Virginia Kelley Mayor
Dwight Duggins Town Clerk
 5-11-2017 Attest Date

Legend		Wendell Zoning	
	Corporate Limits		CC
	Wendell ETJ		CH
	Parcels		CMX
	MI-CU		DMX
	NC		DMX_CU
	NC-CU		MI
	PUD-15-1		CMX-CU
	R2		DMX
	R2CU		DMX_CU
	R3		MI
	R3CU		CMX-CU
	R4		MI-CU
	R4-CD14-01		NC
	R7		NC-CU
	CMX-CD		PUD-15-1
	R2-CD		R2
	R2-CD		R2CU
	R2-CD		R3
	R2-CD		R3CU
	R2-CD		R4
	R2-CD		R4-CD14-01
	R2-CD		R7
	R2-CD		CMX-CD
	R2-CD		R2-CD
	R2-CD		CH-CD
	R2-CD		MI-CD
	R2-CD		RA
	R2-CD		RR